

ENJOY A SCENIC DAY-OUT

RHEILFFORDD ERYRI WELSH HIGHLAND RAILWAY



*'One of the greatest
train journeys in
the world...'*

The Telegraph

RHEILFFYRDD FFEISTINIOG AC ERYRI
FFESTINIOG & WELSH HIGHLAND RAILWAYS
**2017 PRICES
BOOK ONLINE
TODAY**

One Child per Adult
- see inside

Kids
under 16yrs
GO FREE

September

March

2018 - 2019

Train times and information



Steaming through the beautiful Gwyrfa Valley...

The Welsh Highland Railway - which has been listed as one of the greatest train journeys in the world - runs for 25 miles through the amazing scenery of the Snowdonia National Park...

Travel from the shadows of Caernarfon Castle, up and over the foothills of Snowdon and past the picture postcard village of Beddgelert, then through the stunning Aberglaslyn Pass - which has been described as the most beautiful view in Britain - and on to Porthmadog...

The Welsh Highland Railway is part of the Ffestiniog & Welsh Highland Railways - why not try both...!

The Ffestiniog Railway is the world's oldest independent railway with almost 200 years of history, and takes you on a 13½ mile journey from the harbour in Porthmadog to the slate-quarrying town of Blaenau Ffestiniog...



'Brilliant experience...' *Waterlooman2017*



"What a fantastic day out this is, beautiful scenery, interesting trains, reasonable prices. Above all the staff, paid and volunteers, really go out of their way to make you feel you are welcome. Another feature is the cleanliness of the carriages, stations and facilities. They deserve to succeed..."

'Fabulous day out...' *Marc N*

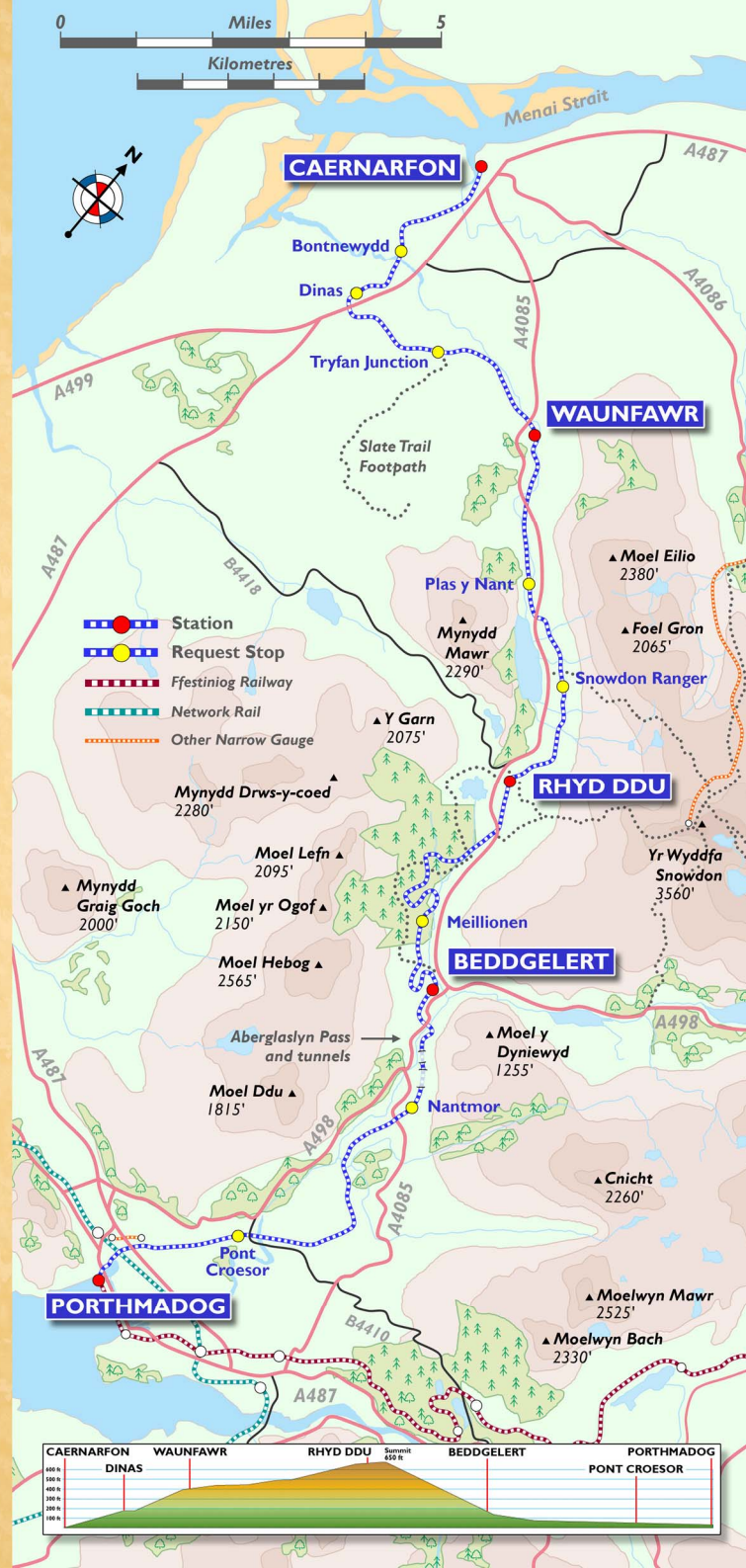


"Fantastic day out and great way to see ... around Snowdonia. Fabulous service on the train, providing a selection of lunches and drinks. Strongly recommend this for a day out..."

'Much more fun than going by car...' *tisi2010*



"My first trip on the Welsh Highland Railway. Wow...! Definitely the best way to see the "wilderness" aspect of North Wales, truly stunning scenery..."



How long does the journey last..?

"Around 2¼ hours from one end of the line to the other. You can travel back on the same train or - if you have time to spare - you can leave the train at one of our stations, do some exploring and travel back on a later train..."

Is there food available on the train..?

"Yes, light refreshments and freshly cooked food, together with a selection of beers, wine and spirits, are available - served at your seat by our friendly stewards..."

Can we bring our dog with us..?

"Yes, for a standard fare of £3 - but not in First Class areas of the train ... and please keep them off seats and tables."

Note: All Assistance Dogs travel free - in any section of the train.

Are there any toilets on the trains..?

"All of our corridor-connected coaches have access to an on-train toilet - please ask our staff for directions..."

A sense of place... The railway is proud to run through the heartland of Wales. '**Croeso Cynnes Cymraeg**' means a '**Warm Welsh Welcome**' - and you can be assured of this on the Welsh Highland Railway. Many of the staff and volunteers speak Welsh as their first language and you are bound to hear it on the train, as well as see it in the names of places you pass. This panel gives a translation of some of those connected to the railway...



Afon	River	Caernarfon	The Fort in Arfon
Bont *	Bridge	Dinas	Hill Fortress
Caer	Fort / Castle	Wauanfawr	Large Moor
Llyn	Lake	Cwellyn	Fish Trap Lake
Nant	Stream	Rhyd Ddu	Black Ford
Newydd	New	Beddgelert	Gelert's Grave
Plas	Hall / Mansion	Porthmadog	Madog's Port
Pont *	Bridge	Rheilffordd *	Railway
Porth	Port	Eryri	Snowdonia

* At times the first letter of Welsh words changes to make saying things easier - so '**Pont**' can become '**Bont**', as in **Bontnewydd**.

In Welsh '**Rh**' is just one letter - so when, for example, you see the phrase '**Croeso i Reilffordd Eryri**' it is spelt correctly..!



A Full Day-Out - Coast to Coast..!

Sit back, relax and unwind as we take you on a journey through the heart of Snowdonia.

Travelling between Caernarfon and Porthmadog, you will glide past magnificent scenic vistas, while savouring the romance of gleaming steam locomotives and comfortable carriages.

Caernarfon:

This medieval walled town and World Heritage Site is famous for its castle and narrow streets. Take a stroll along the Menai Straits, walk the battlements or relax in one of its many cafés.

Porthmadog:

An historic harbour town - bustling with shops and cafés. Enjoy stunning views from the Cob embankment, visit the Maritime Museum or grab a bite to eat at Spooner's restaurant.

Along the way...

Fancy a shorter journey..?

If so, there are lots of places to explore along the line.

Wauanfawr:

This small village is a favourite for walks - or for visiting the local brewpub by the station.

Rhyd Ddu:

Feeling active..? One of the best paths up Snowdon starts here. If not... Take a short stroll to the nearby pub or local tea room.

Beddgelert:

A picture postcard village with stone-built dwellings, inns and hotels, surrounded by the finest scenery and a variety of walks.

Pont Croesor:

Stop off here for the Glaslyn Wildlife and Osprey Centre.

See our website for further inspiration and more walks...

MEDI SEPTEMBER

S	S	M	T	W	T	F
1	2	3	4	5	6	7
8	9	10	11	12	13	14
15	16	17	18	19	20	21
22	23	24	25	26	27	28
29	30					

HYDEF OCTOBER

S	S	M	T	W	T	F
		1	2	3	4	5
6	7	8	9	10	11	12
13	14	15	16	17	18	19
20	21	22	23	24	25	26
27	28	29	30	31		

TACHWEDD NOVEMBER

S	S	M	T	W	T	F
					1	2
3	4			7	8	
10				14	15	
17				21	22	
24						

RHAGFYR DECEMBER

S	S	M	T	W	T	F
8*	9*					
15*	16*					
22*	23*			26	27	28
29	30	31	* SANTA TRAINS			

IONAWR JANUARY

S	S	M	T	W	T	F
			1			

CHWEFROR FEBRUARY

S	S	M	T	W	T	F
16	17		29	20	21	
23	24		26	27	28	

MAWRTH MARCH

S	S	M	T	W	T	F
2	3			6	7	
9	10			13	14	
16	17			20	21	
23	24			27	28	

ADVERSE WEATHER:
 In the event of heavy snowfall or icy conditions our train services may not be able to run exactly as shown on the timetables. Please check with our Booking Office staff - by phoning **01766 516024** before travelling to the railway.

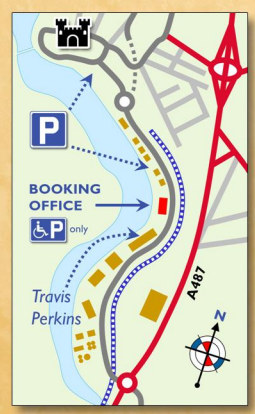
New Season Timetable from 30th

CAERNARFON STATION:

We expect to move into our brand-new station building in time for the Santa and Xmas Week trains - until then our Booking Office / Gift Shop will remain in alternative premises, located just a short distance further along St Helen's Road, next to Travis Perkins Builders Merchants.

Trains will still use the original station, but with pedestrian access available from the far end of the platform, close to the new Booking Office.

Parking - a limited number of Disabled spaces are available by our Booking Office. There is a small car park next to Gwynedd Tyres, while the large Slate Quay car park is just a few minutes walk away, close to the castle.



Times shown in **RED** indicate where trains pass each other at stations. Passengers can transfer from one train to another by crossing the platform providing the option of a shorter or longer journey, as applicable.

	1050	1415
Porthmadog		
Beddgelert	1130	1455
Rhyd Ddu	1155	1525
Waunfawr	1220	1550
Caernarfon	1300	1625
Caernarfon	1000	1420
Waunfawr	1030	1450
Rhyd Ddu	1100	1525
Beddgelert	1130	1550
Porthmadog	1215	1630

	0940	1255	1540
	1025	1335	1620
	1100	1400	1645
	1125	1430	1715
	1210	1510	1750
1000	1300	1545	
1030	1330	1615	
1100	1400	1645	
1130	1430	1710	
1215	1515	1755	

Porthmadog	1115	1405
Hafod y Llyn	1145	1435
Hafod y Llyn	1155	1445
Porthmadog	1230	1520

BROWN DATES:
 We recommend these trains **only** be used for a round-trip from Harbour Station, Porthmadog due to there being extremely limited access at Hafod y Llyn.

Porthmadog	1115	1420
Beddgelert	1155	1500
Beddgelert	1225	1530
Porthmadog	1305	1610

Dates shown with a grey background indicate that trains will **only** be running on the Ffestiniog Railway. Please refer to the FR leaflet for details.

Caernarfon	1015	1315
Waunfawr	1045	1345
Rhyd Ddu	1115	1415
Rhyd Ddu	1145	1445
Waunfawr	1215	1515
Caernarfon	1245	1545

• SPECIAL EVENTS •
SUPER-POWER WEEKEND
 14, 15, 16 Sept
HALLOWEEN TRAIN
 31 October
SANTA TRAINS
 8, 9, 15, 16, 22, 23 December
 Please visit our website for more information and details of our special event train services.

Trains will also call at a number of stops by request - full details at festrail.co.uk/timetable-whr.htm

PLEASE NOTE:

Steam locomotives are used throughout the year and the smoke from these engines adds to the heritage ambience of this historic railway. Please take care when close to the locomotives, especially when trains are leaving the stations.

The Ffestiniog Railway Company will not be held liable for any soiling of, or damage to, clothing or any other property.

Every effort will be made to maintain the services shown. However, the Company reserves the right to cancel, alter or suspend any train without notice and accepts no liability for any loss, inconvenience or delay thereby caused.

First or Third Class..?

Our modern Third Class carriages are something we are justly proud of - as you can see below - with large windows, comfortable seats, an 'at your seat' buffet service and access to the on-train toilets...



There are a large number of seats on all of our trains. However, for peace of mind, why not book in advance for the departure of your choice - see bottom of page...

First Class travel in one of our luxurious Pullman carriages is available for an additional charge, which is based on the length of your journey. The supplement for travel in a single direction ranges from £7 to £11 per person...



First Class seats may be booked and reserved (subject to availability) right up to departure time at either Porthmadog or Caernarfon Booking Office. However, as these carriages are very popular, **advance booking** is strongly advised to obtain seats on the train of your choice. Please phone our friendly Booking Office staff on **01766 516024** to complete your booking and help you organise your day. **Please note that online booking for First Class seats is not currently available due to the bespoke nature of our carriages.**

♦ Please be aware that on trains starting from Porthmadog the Observation area will be at the front of the train - and therefore directly behind the engine..!

Online Booking...

Don't forget that Third Class seats - as well as some Special Event tickets - can be booked online at **www.festrail.co.uk**



Ticket to Ride..!

Prisiau Dwyffordd Oedolyn

Adult Return Fares

Round-trip from PORTHMADOG to ... or vice-versa	Caernarfon £39.80	Rhyd Ddu £26.30
	Waunfawr £32.70	Beddgelert £21.90

Round-trip from CAERNARFON to ... or vice-versa	Porthmadog £39.80	Rhyd Ddu £23.90
	Beddgelert £30.50	Waunfawr £13.20

PORTHMADOG - BEDDGELERT RETURN **£21.90**

- applies to trains running on the **PURPLE** timetable dates

A 16-mile round trip on the Welsh Highland Railway, through the beautiful Glaslyn Valley and spectacular Aberglaslyn Pass - with the option of a half-hour or an extended 3½ hour break in Beddgelert or, if travelling from Beddgelert, a 1¼ hour break in Porthmadog.

HAFOD Y LLYN RETURN **£13.00**

- applies to trains running on the **BROWN** timetable dates:

A 10-mile round-trip on Welsh Highland Railway, through the Glaslyn Valley from Porthmadog to Hafod y Llyn and return.

OTHER FARES are available for intermediate stations **and** for one-way journeys

Please arrive at the Booking Office no later than 30 minutes before departure time. Fares correct at time of going to press

Plant

Children

Child fares apply to under-16yrs. Adult fares apply from 16th birthday.

ALL Children less than 3 years old - FREE

One Child (3-15 years old) per Adult - FREE

Additional children travel for approximately half-fare.

Cŵn a Beiciau

Dogs and Bicycles

Flat fare of **£3.00** for dog or bicycle. All Assistance Dogs travel free.

(Dogs are not permitted in First Class - except for Assistance Dogs.)

There is limited space for bicycles on our trains. Please check for availability with the Booking Office - 01766 516024 - before travelling.

Hgyrchedd

Accessibility

We have several accessible carriages with extra-wide doors, so we can accommodate a standard size/weight wheelchair on most of our trains.

Access to these carriages is by means of a portable ramp.

Our major stations have ramped access and specially adapted toilets.

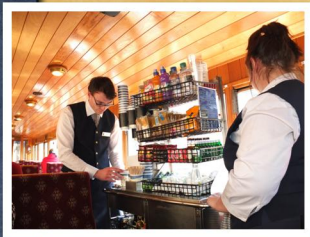
Please phone us in advance of your visit, so we can give you detailed advice and reserve you a space on the train.

Our Access Statement is available online and from our Booking Offices.

Archebion Grwpiau

Group Bookings

Reduced fares for parties of 20 or more - but please note that group visits should be booked in advance to avoid disappointment. We also offer bespoke wedding day, private charter trains and corporate services. Please phone our Group Travel staff on **01766 516024** for more information on our facilities, travel and/or catering options and prices.



On-Train Catering...

Enjoy tasty food at your seat during the journey - brought to your table by our buffet stewards. Choose drinks and snacks from our trolley service - or order freshly-prepared hot food from the on-board kitchen. You can also enjoy drinks from our range of beers, wines and spirits...



Spooner's...

Open seven days a week, from early till late, Spooner's Café-Bar at Harbour Station is the perfect place to visit for a quick snack, a leisurely meal or drinks from the award-winning bar - indoors or outside on the patio, with its stunning views of the mountains. www.spoonerspub.co.uk



Gifts & Souvenirs...

We have souvenir shops at our main stations in Porthmadog and Caernarfon. A wide range of railway related items - as well as general gifts and souvenirs - are available to suit all ages. You can also shop 'online' from anywhere in the world, using our web shop www.festshop.co.uk



Come and join us...

Many of the people working on the railway are volunteers - who come from all walks of life and all around the globe to keep the trains running for our visitors.

If you would like to become part of the F&WHR team, you can find more information at festrail.co.uk/volunteer.htm

Another way to get more closely involved is by joining the railway's support group - the Cymdeithas Rheilffordd Eryri • Welsh Highland Railway Society. Members receive a quarterly illustrated magazine and travel privileges. Further information about the Society - its local groups, activities, projects and social events - can be found online at www.whrsoc.org.uk



Special Events...

Super-Power Weekend
14 - 16 September

Come and help us celebrate our 21st birthday on a weekend full of interest. Fun for all the family - as well as for enthusiasts...

Halloween Train *
31 October

Ride our ghoulish train for an evening of spooky fun and tasty treats at the Snowdonia Park Brewpub in Waunfawr...

Santa Trains *
8, 9, 15, 16, 22, 23 December

Join Santa and his band of elves on our festive trains - with a present for every child, plus sherry and mince pie for adults. Be one of the first to use our new station building, as this year Santa Trains will run from Caernarfon to Rhyd Ddu...

* Advance Booking required for travel on these special trains.

Visit our website for further details of our Special Events...



Caernarfon's new station building...

Twenty-one years after the first Rheilffordd Eryri • Welsh Highland Railway train services started running from Caernarfon, a brand new station building is taking shape and will soon be ready to welcome its first visitors, for our Santa Trains and Christmas/New Year services.

Working in close partnership with CADW, Gwynedd Council, Caernarfon Harbour Trust and other community groups, the building forms part of a project to regenerate the waterfront area and will contain an exhibition area as well as café, ticket office and retail space.



One of the Great Little Trains of Wales

Gweithredir Rheilffordd Eryri gan -

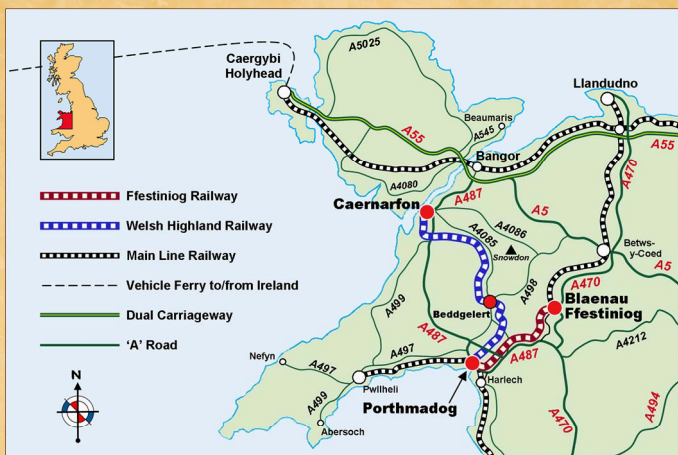
The Welsh Highland Railway is operated by -

FFESTINIOG & WELSH HIGHLAND RAILWAYS

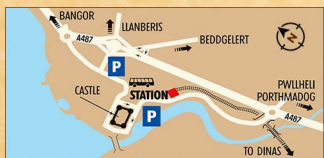
Gorsaf yr Harbwr • Harbour Station,
Porthmadog, Gwynedd, LL49 9NF

01766 516024

enquiries@ffwhr.com



CAERNARFON



PORTHMADOG



BY ROAD:

Caernarfon Station is on **St Helen's Road** (follow the brown tourism signs through the town). See Page 6 for further details on station location and parking information.

In Porthmadog, please use the main town car park which is just 200 yards from Harbour Station - follow signs from the main road. A small number of disabled parking spaces and a handy 'drop-off' point are available at Harbour Station.

'SAT-NAV' INFO	CAERNARFON	Station/Booking Office - Car Parks nearby	LL55 2YD
	PORTHMADOG	Drop-off point and Disabled Parking	LL49 9NF
	PORTHMADOG	Main Town 'Pay & Display' Car Park	LL49 9PG

BY TRAIN:

Via North Wales Coast: The nearest mainline station is Bangor - served by trains from Crewe, Manchester and London - with a regular bus service to Caernarfon town centre.

Through Mid Wales: Use trains, via Shrewsbury and Machynlleth, for the Cambrian Coast line. Alight at Porthmadog and Harbour Station is around a 15 minute walk away.

BY BUS:

From Caernarfon's main bus stops, walk towards the castle. Turn left down the hill in front of the castle, then left again. See Page 6 for further details on station location. Porthmadog's main bus stops are on the High Street, around 300 yards from the station.

PLEASE NOTE:

For further information on local bus and train services in Wales - contact Traveline Cymru on **0871 200 22 33** or visit their website **www.traveline-cymru.info**