

SCENIC TRIPS BY STEAM

RHEILFFORDD

FFESTINIOG

RAILWAY



*A magical combination of
spectacular landscape
and historic railway*



One Child per Adult
- see inside
Kids
under 16yrs
GO FREE

March to
November **2020**

Train times and information

Double Fairlie 'Merddin Emrys' steams past Llyn Ystradau



Photo: David Chandler

The Ffestiniog Railway - the UK's leading narrow gauge line - built to carry slates to the sea, takes you on a dramatic journey through the stunning scenery of the Snowdonia National Park..!

Steeped in history, the 13½-mile journey winds its way from the harbour town of Porthmadog, past amazing valley views, cascading waterfalls, ancient woodlands and mountain peaks to reach the slate-quarrying town of Blaenau Ffestiniog.



'Stunning scenery...' r1ckards2



"Porthmadog to Blaenau Ffestiniog, with my husband and a small dog ... WOW what a trip..! Well worth the money. The scenery was stunning and it was a brilliant experience."

'Wonderful...' Goodasgold20



"We would highly recommend this. From the nearby cafe to the knowledgeable and helpful staff on the train, it made the whole journey and experience memorable for all of us. The children were interested in the old track and views were stunning. Would thoroughly recommend this as a day out."

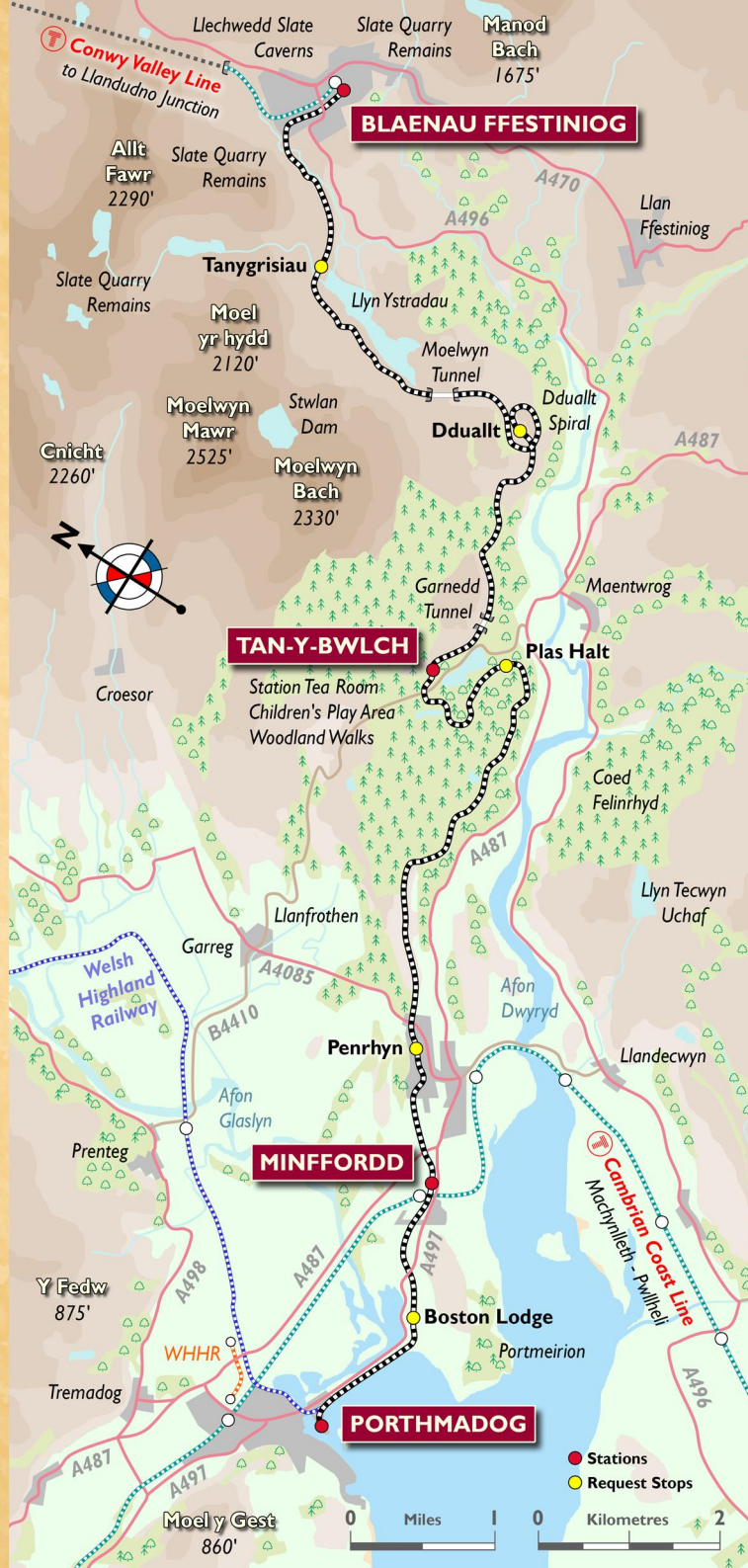
'Full steam ahead..!' bettytoo



"These trains are wonderfully well maintained ... The scenery is breath-taking and unlike the trains where we live, they were on time..! Would recommend to anyone - the best way to view the Snowdonia National Park."

The Ffestiniog & Welsh Highland Railways operate two spectacular railways in Snowdonia - why not try both..!

The Welsh Highland Railway - listed as one of the world's greatest train journeys - runs 25 miles 'coast to coast' between the medieval town of Caernarfon and the historic Porthmadog, crossing foothills of Snowdon along the way...



How long does the journey last..?

"Around 1 ¼ hours from one end of the line to the other. You can travel back on the same train or - if you have time to spare - you can leave the train at one of our stations, do some exploring and travel back on a later train..."

Is there food available on the train..?

"Yes, a range of light refreshments, hot and cold drinks, together with a selection of beers, wine and spirits, are available - served at your seat by our friendly stewards..."

Can we bring our dog with us..?

"Yes, for a standard fare of £3 - but not in First Class areas of the train ... and please keep them off seats and tables."

Note: All Assistance Dogs travel free - in any section of the train.

Are there any toilets on the trains..?

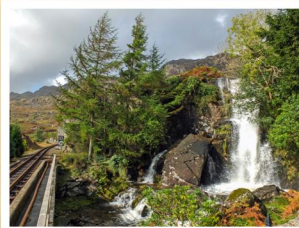
"All of our corridor-connected coaches have access to an on-train toilet - please ask our staff for directions..."

A sense of place... The railway is proud to run through the heartland of Wales. '**Croeso Cynnes Cymraeg**' means a '**Warm Welsh Welcome**' - and you can be assured of this on the Ffestiniog Railway. Many of the staff and volunteers speak Welsh as their first language and you are bound to hear it on the train, as well as see it in the names of places you pass. This panel gives a translation of some of those connected to our railways...



Porthmadog	Madog's Port	Bleiddiau	Wolves
Minffordd	Edge of the Road	Coch *	Red
Penrhyn	Headland	Coed	Wood
Tan y Bwlch	Under the Pass	Croeso i	Welcome to
Dduallt	Black Hill	Llyn	Lake
Tanygrisiau	Under the Steps	Plas	Hall / Mansion
Blaenau	Highland	Porth	Port
Ffestiniog	Stronghold	Rhiw	Slope / Bank
Rheilffordd *	Railway	Traeth	Beach

* At times the first letter of Welsh words changes to make saying things easier - so '**Coch**' can become '**Goch**', as in '**Rhiw Goch**'. In Welsh '**Rh**' is just one letter, so if you see a phrase like this - '**Croeso i Reilffordd Ffestiniog**' - it **has** been spelt correctly..!



Take time out - or be energetic...

Make the most of your day-out - visit a local attraction, walk in the mountains or relax over afternoon tea in a secluded wooded valley.

Travelling between Porthmadog and Blaenau Ffestiniog, you will climb through verdant valleys and ancient woodland, passing lakes, waterfalls and mountains whilst savouring the romance of gleaming steam locomotives and comfortable carriages...

Porthmadog:

An historic harbour town - explore its busy quayside, shops and cafés. Walk along the Cob embankment with its stunning mountain views, visit the town's Maritime Museum or grab a bite to eat at Spooner's restaurant.

Tan-y-Bwlch:

Nestled in the heart of the National Park, halfway along the railway, our picturesque station is home to our popular licensed tea room, serving a selection of homemade cakes, snacks and light refreshments.

Great for families, with lovely woodland views and a play area, this station also provides access to a variety of walks suitable for a range of ages and abilities.

Blaenau Ffestiniog:

Known as 'the town that roofed the world' - wander through its streets to see slate sculptures, historic buildings and visit the local shops, cafés and pubs.

Feeling active..? You could fly through the air at Zip World, ride mountain bike trails or head underground to Bounce Below or Llechwedd Slate Caverns.

See our website for further inspiration and more walks...

**Match the colour of the date in the calendar grids
[opposite] to the same colour timetable panel below...**

Times shown in **RED** indicate where trains pass each other at stations.
Passengers can transfer from one train to another by crossing the platform providing the option of a shorter or longer journey, as applicable.

	Porthmadog				Blaenau Ff.				
	1005	1125	1335	1550	0840	1005	1125	1335	1550
Porthmadog	1005	1125	1335	1550	0840	1005	1125	1335	1550
Minffordd	1015	1135	1345	1600	0850	1015	1135	1345	1600
Tan-y-Bwlch	1045	1205	1410	1630	0915	1045	1205	1410	1630
Blaenau Ff.	1120	1240	1445	1705	0950	1120	1240	1445	1705
Blaenau Ff.	1135	1340	1505	1725	1010	1135	1340	1505	1725
Tan-y-Bwlch	1205	1410	1535	1750	1045	1205	1410	1535	1750
Minffordd	1230	1435	1600	1815	1110	1230	1435	1600	1815
Porthmadog	1245	1450	1615	1830	1125	1245	1450	1615	1830

	Porthmadog		Blaenau Ff.									
	1005	1335	1005	1035	1125	1335	1430	1550	1600	1635	1705	1725
Porthmadog	1005	1335	1005	1035	1125	1335	1430	1550	1600	1635	1705	1725
Minffordd	1015	1345	1015	1045	1135	1345	1440	1600	1635	1705	1725	
Tan-y-Bwlch	1045	1410	1045	1115	1205	1410	1510	1635	1705	1725		
Blaenau Ff.	1120	1445	1120	1150	1240	1445	1550	1705	1725			
Blaenau Ff.	1135	1505	1135	1220	1340	1525	1605	1725				
Tan-y-Bwlch	1205	1535	1205	1250	1410	1605	1635	1750				
Minffordd	1230	1600	1230	1320	1440	1625	1700	1815				
Porthmadog	1245	1615	1245	1335	1455	1640	1715	1830				

* The 1805 train does not run on dates shown with an asterisk

	Porthmadog							
	0840	1005	1035	1155	1335	1430	1550	1805
Porthmadog	0840	1005	1035	1155	1335	1430	1550	1805
Minffordd	0850	1015	1045	1205	1345	1440	1600	1815
Tan-y-Bwlch	0915	1045	1115	1250	1410	1510	1635	1845
Blaenau Ff.	0950	1120	1150	1320	1445	1550	1705	1920
Blaenau Ff.	1010	1135	1220	1340	1525	1605	1725	1940
Tan-y-Bwlch	1045	1205	1250	1410	1605	1635	1750	2010
Minffordd	1115	1230	1320	1440	1625	1700	1815	2035
Porthmadog	1130	1245	1335	1455	1640	1715	1830	2050

PLEASE NOTE:

Steam locomotives are used throughout the year and the smoke from these engines adds to the heritage ambience of this historic railway. Please take care when close to the locomotives, especially when trains are leaving the stations.

The Ffestiniog Railway Company will not be held liable for any soiling of, or damage to, clothing or any other property.

Every effort will be made to maintain the services shown. However, the Company reserves the right to cancel, alter or suspend any train without notice and accepts no liability for any loss, inconvenience or delay thereby caused.

MAWRTH MARCH

S	S	M	T	W	T	F
.
.
.
28	29	30	31			

MAI MAY

S	S	M	T	W	T	F
						1
2	3	4	5	6	7	8
9	10	11	12	13	14	15
16	17	18	19	20	21	22
23	24	25	26	27	28	29
30	31					

GORFFENNAF JULY

S	S	M	T	W	T	F
			1	2	3	
4	5	6	7	8	9	10
11	12	13	14	15	16	17
18	19	20	21*	22*	23*	24
25	26	27	28	29	30	31

MEDI SEPTEMBER

S	S	M	T	W	T	F
			1*	2*	3*	4
5	6	7	8	9	10	11
12	13	14	15	16	17	18
19	20	21	22	23	24	25
26	27	28	29	30		

TACHWEDD NOVEMBER

S	S	M	T	W	T	F
						1

EBRILL APRIL

S	S	M	T	W	T	F
				1	2	3
4	5	6	7	8	9	10
11	12	13	14	15	16	17
18	19	20	21	22	23	24
25	26	27	28	29	30	

MEHEFIN JUNE

S	S	M	T	W	T	F
			1	2	3	4
5	6	7	8	9	10	11
12	13	14	15	16	17	18
19	20	21	22	23	24	25
26	27	28	29	30		

AWST AUGUST

S	S	M	T	W	T	F
1	2	3	4	5	6	7
8	9	10	11	12	13	14
15	16	17	18	19	20	21
22	23	24	25	26	27	28
29	30	31				

HYDREF OCTOBER

S	S	M	T	W	T	F
					1	2
3	4	5	6	7	8	9
10	11	12	13	14	15	16
17	18	19	20	21	22	23
24	25	26	27	28	29	30
31						

Details of our Winter train services (from 2nd November onwards) will be published later in 2020 - both in print and on our website www.festrail.co.uk

TRAINS ALSO CALL AT THE FOLLOWING STOPS BY REQUEST:

Please tell the Guard where you are travelling to before getting on the train or give a clear signal to the engine driver as the train approaches you.

REQUEST STOP	TRAINS TO BLAENAU FF.	TRAINS TO PORTHMADOG
Boston Lodge	Approx. 5 minutes after Porthmadog	Approx. 5 minutes after Minffordd
Penrhyn	Approx. 5 minutes after Minffordd	Approx. 15 minutes after Tan-y-Bwlch
Plas Halt	Approx. 15 minutes after Minffordd	Approx. 5 minutes after Tan-y-Bwlch
Dduallt	Approx. 10 minutes after Tan-y-Bwlch	Approx. 15 minutes after Blaenau Ff.
Tanygrisiau	Approx. 20 minutes after Tan-y-Bwlch	Approx. 5 minutes after Blaenau Ff.

SPECIAL EVENTS

'FAIRLIE EVENTFUL' 19 - 21 June **VICTORIAN VINTAGE WEEKEND** 9 - 11 October
SANTA TRAINS 5, 6, 12, 13, 19, 20 December

Please visit our website for further information on amended timetables and details of extra trains that will be running during special events.

First or Third Class..?

Our modern carriages have large windows and comfortable seats, a handy 'at your seat' buffet service and access to the on-train toilets. Each train also includes a First Class carriage.



Third Class tickets may be purchased in advance for the train of your choice, either online or by phone - see below.

First Class seats may be booked and reserved (subject to availability) up to departure time at either Porthmadog or Blaenau Ffestiniog Booking Office. However, these carriages are very popular, so **advance booking** is strongly advised.

An additional charge of **£8** per person is made for First Class travel in a single direction - so the supplement for a return journey in a First Class carriage would be **£16** per person...

Please note that, on our trains from Blaenau Ffestiniog to Porthmadog, the Observation carriage will be at the front of the train - and therefore directly behind the engine..!

Advance Booking...

Day Tickets, 'Early Bird' and 'Sunset Special' tickets (see facing page for details), as well as tickets for many of our special events, can be booked in advance - either online or by phone with our main Booking Office.



www.festrail.co.uk



01766 516024

Tickets for First Class travel can also be booked online - or you can phone our friendly Booking Office staff, so they can help organise your day. Extra options are also available to enhance special occasions - further details on request.

A £1.00 booking fee applies when tickets are sent by post.

Group Travel and Special Functions...

Groups are welcome, but organisers should book in advance to avoid any disappointment. Various journey options are available, with group rates for parties of twenty or more.

We also offer bespoke wedding day, private charter trains and corporate services.

For more information on facilities, travel, catering and prices please phone our Group Travel staff on **01766 516024**.

Ticket to Ride..!

Prisiau Dwyffordd Oedolyn

Adult Return Fares

DAY TICKET - travel all the way along the line and back again or ride the trains as many times as possible on the date of issue..! **£26.40**

HALF-WAY RETURN Porthmadog - Tan-y-Bwlch **£17.00**
Blaenau Ffestiniog - Tan-y-Bwlch **£14.70**

EARLY BIRD • SUNSET SPECIAL (see the notes below) **£22.40**

OTHER FARES are available for intermediate stations and for one-way journeys

Please arrive at the Booking Office no later than 30 minutes before departure time. Fares correct at time of going to press.

EARLY BIRD*: Make the most of your day, and also save money, by getting a good start riding on the 'Early Bird'. Catch the **08:40** from Porthmadog or the **10:10** from Blaenau Ffestiniog - an ideal way of getting out for a day walking in the mountains or of having more time to explore towns, coast or country during your visit.

Restriction - The return portion of 'Early Bird' tickets cannot be used for travel on any trains departing between **11:00** and **12:00**...

SUNSET SPECIAL*: Don't waste the long summer evenings - take a scenic trip on the **18:05** train to Blaenau Ffestiniog. An optional hot supper is served during the journey - this must be pre-booked through Porthmadog booking office, in person or by phone...

** Please Note - Further discounts cannot be applied to this reduced fare*

SNOWDONIA SINGLE - ride the length of the F&WHR **£41.65**
Blaenau Ffestiniog to Caernarfon (or vice-versa) - not available all-year round.
Check timetables carefully and use public transport to complete your journey.

Plant

Child fares apply to under-16yrs. Adult fares apply from 16th birthday.

ALL Children less than 3 years old - FREE

One Child (3-15 years old) per Adult - FREE

Additional children travel for approximately half-fare.

Children

Cŵn a Beiciau

Dogs and Bicycles

Flat fare of **£3.00** for dog or bicycle. All Assistance Dogs travel free.
(Dogs are not permitted in First Class - except for Assistance Dogs.)

There is limited space for bicycles on our trains. Please check for availability with the Booking Office - 01766 516024 - before travelling.

Hygyrchedd

Accessibility

We have several accessible carriages with extra-wide doors, so we can accommodate a standard size/weight wheelchair on most of our trains.

Access to these carriages is by means of a portable ramp.

Our major stations have ramped access and specially adapted toilets.

Please phone us in advance of your visit, so we can give you detailed advice and reserve you a space on the train.

Our Access Statement is available online and from our Booking Offices.



Snacks from the Buffet

On-Train Catering...

Enjoy a tasty treat during your journey. Choose from the wide range of hot and cold drinks, snacks & confectionery available from our refreshments service - brought to your table by our buffet stewards. A selection of beers, wines and spirits are also available on our trains...



Tea Room at Tan-y-Bwlch

Station Cafés...

Open daily, from early till late, Spooner's at Harbour Station is the perfect place to visit for a quick snack, a leisurely meal or drinks from the real-ale bar. The Tearoom at Tan-y-Bwlch is ideal for walkers and families with a range of tasty treats and drinks to enjoy inside or out...



Souvenirs, Gifts & Models

Gifts & Souvenirs...

We have souvenir shops at our main stations in Porthmadog and Blaenau Ffestiniog. A wide range of railway related items - as well as general gifts and souvenirs - are available to suit all ages. You can also shop 'online' from anywhere in the world, here at www.festshop.co.uk



Volunteer Gardeners

Come and join us...

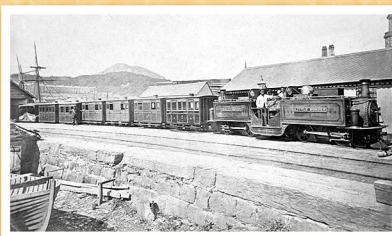
Many of the people working on the railway are volunteers - who come from all walks of life and all around the globe to keep the trains running for our visitors.

If you would like to become part of the F&WHR team, you can discover more information at www.festrail.co.uk/volunteer.htm

Another way you could get more closely involved is by joining the railway's support group - the Ffestiniog Railway Society. Members receive a quarterly illustrated magazine and travel privileges. Further information about the Society - its local groups, activities, projects and social events - is available on their website at www.ffestiniograilway.org.uk



'Little Wonder' on Creuau Bank - just above present-day Tan-y-Bwlch station.



'Little Wonder' at Harbour Station in 1871 - the year after the 'Fairlie Trials'.

Back in 1870...

One hundred and fifty years ago, a pioneering engineer was proudly showing his innovative locomotive to eminent figures from Britain's railways and emissaries from many countries - including Russia.

The engineer was Robert Francis Fairlie, the locomotive was 'Little Wonder'.

Trials were held from September 1869 to July 1870 which proved it capable of hauling trains more than twice as heavy as the railway's original small engines, built by George England.



Victorian Weekend Trains

Coming in 2020...

Fairlie Eventful... 19 - 21 June

Join us for a special weekend commemorating the 150th Anniversary of the Fairlie trials - the successful outcome of which inspired the building of narrow gauge railways in difficult terrain around the world.

Victorian Vintage Weekend 9 - 11 October

Living history - with authentic trains and costumed characters. Come and take photos, dress up or just enjoy the atmosphere...

Victorian Santa Trains * Various dates in December

Join Santa and his elves on our traditional festive trains for lots of family-fun with a present for every child, plus sherry and mince pie for adults..!

* Advance Booking required for travel on these special trains.



First Class on a Santa Train

Further details of our Special Events will be available online - from our website and our Facebook page - with information being added as details are finalised...



Gweithredir Rheilffordd Ffestiniog gan -
The Ffestiniog Railway is operated by -

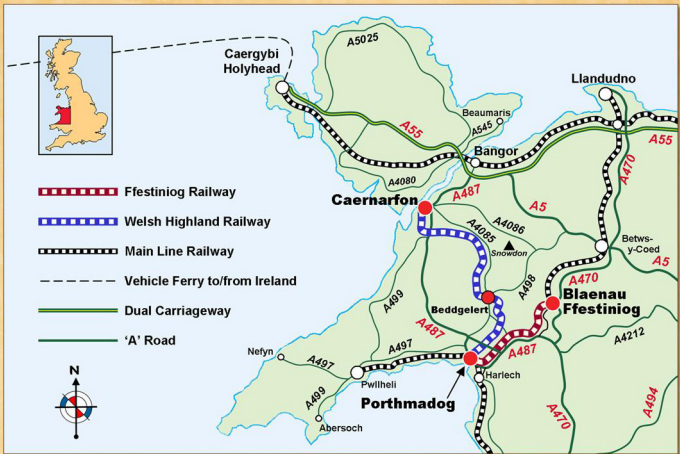
Sicrwydd
Ansawdd
Quality
Assured

FFESTINIOG & WELSH HIGHLAND RAILWAYS

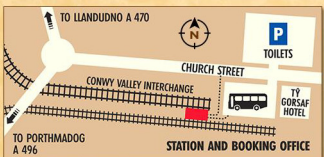
Gorsaf yr Harbwr • Harbour Station,
Porthmadog, Gwynedd, LL49 9NF

01766 516024

www.festrail.co.uk



BLAENAU FFESTINIOG



PORTHMADOG



BY ROAD:

In Blaenau Ffestiniog, please use the main town car parks adjacent to - and across the road from - the Central Station and the Gwesty 'Ty Gorsaf' Hotel.
In Porthmadog, please use the main town car park which is just 200 yards from Harbour Station - follow signs from the main road. A small number of disabled parking spaces and a handy 'drop-off' point are available at Harbour Station.

'SAT-NAV' INFO	BLAENAU FFESTINIOG	Central 'Pay & Display' Car Park	LL41 3ES
	MINFFORDD	Limited Parking	LL48 6HF
	PORTHMADOG	Drop-off point and Disabled Parking	LL49 9NF
	PORTHMADOG	Main Town 'Pay & Display' Car Park	LL49 9PG

BY TRAIN:

Via North Wales Coast: Use trains on the Chester - Holyhead mainline, then change at Llandudno Junction for a train along the Conwy Valley line to Blaenau Ffestiniog.
Through Mid Wales: Use trains, via Shrewsbury and Machynlleth, for the Cambrian Coast line. Alight at either Minffordd (2mins walk) or Porthmadog (15mins walk).

BY BUS:

Porthmadog is well served by bus and coach services which stop in the main street near the station. Blaenau Ffestiniog station is also on several bus routes.

PLEASE NOTE:

For further information on local bus and train services in Wales - contact Traveline Cymru on **0871 200 22 33** or visit their website **www.traveline-cymru.info**